

TECHNICAL BROCHURE

Built to power E-Rickshaws of India

Typical Vehicle Specs

- Seating Capacity 4P+D
- Vehicle Kerb Weight 280 Kg
- Gross Vehicle Weight 680 Kg
- Fixed Gear Ratio 10:1
- Top Speed 25 Km/h
- Wheel Size 3"x12", 6PR

Product Description

High Efficiency Traction motor which is tailored for comfort riding

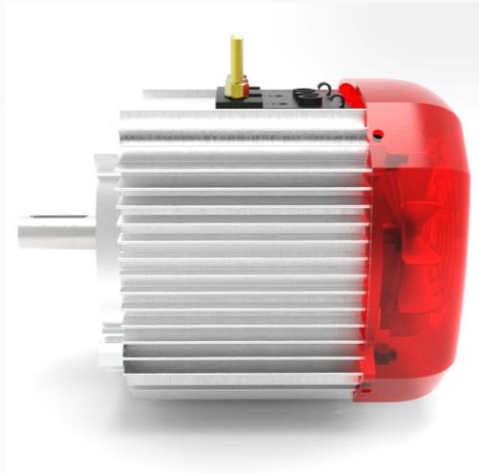
28 January 2021



Address:
motorz Design & Manufacturing P Ltd,
IITM Research Park, 01 FA, I Floor, Kanagam Road,
Taramani, Chennai - 600113
Email: kannan@motorz.in

SPECIFICATIONS

48 V Electric Drive System



Motor type	PMSM
Rated Power	1.2kW
Rated Torque	4Nm
Rated Speed	2800RPM
Peak mode	13Nm@1500RPM
Motor Efficiency	~90%
Torque Ripple	<10%
Motor Size(LXBXH)	181X161X155 mm
Motor Weight	5.9Kg
IP Grade	IP67
Insulation class	F class
Delta T	38 deg-C
Cooling	Tail-mounted fan

Controller type	FOC Sinusoidal output
Operating Range	40-60 V DC
Nominal Voltage	48V
Power Nominal	1.4kW
Peak Power	2KW
Continuous Current AC	25Arms
Peak Current AC	90Arms
Controller Efficiency	98%
Protection	OC,OV,UV & Temp
Position Feedback	Hall Sensor
Diagnostic Channel	CAN
Controller Dimensions(LXBXH)	206X110X92mm
Controller Weight	1.5kg
IP Grade	IP67
Max. operating Ambient Temp	50 deg-C

